



Aerial Apparatus Replacement for the Town of Beaufort





BFD LADDER 1



Pros and Cons of Current Aerial Apparatus

Pros

- Identifies the need for aerial apparatus in Beaufort
- Maneuverability
- Allows accessibility
- Allows reach
- Was donated
 - Additional cost to place in service

Cons

- Requires two FFs to drive
- Requires multiple FFs to operate on-scene
- Limited capabilities
 - No pump
 - No water tank
 - Must be nursed by additional apparatus
- Limited rescue component
 - 250 lbs. tip load (dry)
- 25 yrs. old
 - Maintenance cost
 - Down Time
 - Out of service 8 months in 2019
 - Repair cost

Continued

Pros

Cons

- No firehose for interior attack
- Takes extra floor space in station
 - 57' long
- Difficult to staff in County fire districts
 - Need of multiple apparatus



New Apparatus

Pros

- One driver
- One operator
 - Set up
 - Operations
- Extended reach
 - 105' to 107'
- Rescue Capable
 - 750 lbs. tip load
- 2000 gpm pumping capability
- 500 Gallon booster tank
- Carries fire hose

Cons

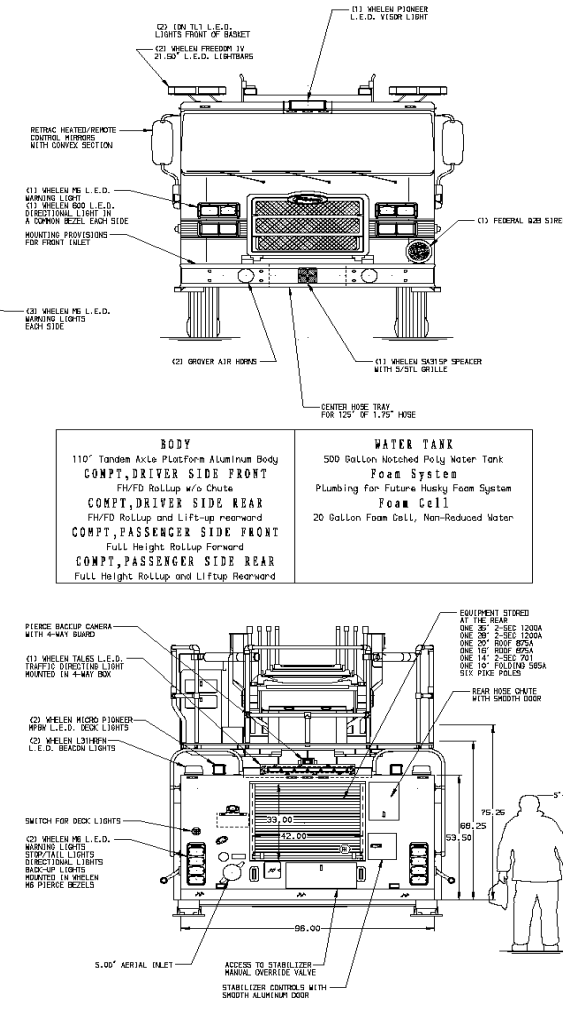
- Cost of new apparatus
 - Looking at rolling stock (demos)
- Less of some maneuverability


New Apparatus (continued)

Pros

- Rated as a “Quint” for ISO rating
- Maintenance warranty
- Corrosion resistance
- 25 yrs. of service life
- Increased crew safety
 - Safe cab
- Rolling stock

Cons



| | | | | | | | | | | | |
|---|--|---|---|---|---|--|---|--|--|--|-------------------------------------|
| CHASSIS Enforcer Chassis 525 HP 5013 Engine | | CAB 7000 Enforcer Cab BUMPER 22" Extended Stainless Steel | AXLE, FRONT, CUSTOM 22,800 LB TAC-4 Axle AXLE, REAR 44,000 LB Horizon Axle | TRANSMISSION Allison 5th Gen, 4500 EVS P | PUMP/HOSE 52" Control Zone Side Mount 2000 GPM Katerbos CSU | CROSSLAYS, 1.50" (2) 1.50" Standard Capacity CROSSLAYS, 2.50" (1) 2.50" Standard Capacity | SPEEDLAYS Speedlays Not Required GENERATOR Harrison 6KW K5V, Hydraulic | SAFETY Side Roll and Frontal Impact Protection | CUSTOMER APPROVAL APPROVED BY: _____ DATE: _____ |  MANUFACTURING INC. | JOB NO. 32151 SCALE 1:24 DATE |
| NOTE: DIMENSIONS SHOWN ARE APPROXIMATE AND ARE SUBJECT TO MINOR DEVIATIONS AS MAY OCCUR OR BE NECESSARY IN CONSTRUCTION. MINOR DETAILS NOT SHOWN. | | 1. 23,000 LBS GROSS WEIGHT 2. ONE 1.50 GPM FLOW WITH 2.00 PSI PUMP AND SHUTTER LOCATED IN CENTER BUMPER TRAY 3. SHUTTERING MATERIAL IS WITH STANDARD PUMP AND AXLES LOCATED ON CAB SIDE OF THE CAB 4. 1000 GPM FLOW FROM WATER TANK 5. BATTERY CHARGER LOCATED UNDER DRIVER SEAT 6. BATTERY CHARGER LOCATED UNDER DRIVER SEAT 7. FUEL ADJUSTABLE SHUTTER IN COMPARTMENT FOR SHIP ORDER 8. SHIP ORDER ADJUSTABLE SHUTTER IN COMPARTMENT FOR SHIP ORDER 9. ONE SKID-BUT TOOL, SHOWN WITH PERSHORE PATTERN IN COMPARTMENT FOR SHIP ORDER 10. CURRENT BREAKER PANEL LOCATED IN COMPARTMENT FOR SHIP ORDER 11. 3.00" WASHED AERIAL, PERMANENT 12. 1000 GPM FLOW FROM WATER TANK 13. 1200 POUND 10 AERIAL, 1/2" | | | | | | | | | |
| REV | | 15/NOV/18 | TKA | TH | ON | ENFORCER | DWG NO. | 32151AD | | SHEET NO. | SHEET NO. 1 of 1 |

Truck Demonstration Benchmarks

- Scrub Area
- Tip load
- Water pipe
- Nozzle flow rates
- Reach Capabilities
 - Water/Cell towers
 - 216 Front St. (residence)
 - Bistro roof
 - 1015 Front St. (condos)
 - Bookout building (Duke Marine Campus)
 - 103 Moore St. condos

FINANCING

- First Option Financing

| | |
|---------------|------------------------------------|
| - \$1,000,000 | 15yrs @ 2.495 = \$80,912 annually |
| | 10yrs @ 2.380 = \$113,746 annually |

- Second Option Financing

| | |
|---------------|-----------------------------------|
| - \$1,000,000 | 15yrs @ 2.24 = \$79,230 annually |
| | 10yrs @ 1.94 = \$110,978 annually |

Questions