



Beaufort Police Department Annex

2020 Board of Commissioners Retreat

February 27, 2020

PD Annex Update

- Funded in FY19 to address deficit in space-needs analysis conducted in FY17 for current facility
 - Study called for 6,500 sf.
 - Combined spaces will produce 5,076 sf.
 - Main PD- 2,988 sf (built in 1950)
 - Annex- 2,088 sf (built in 1950)
 - Budget: \$85,000.00
 - To date: \$69,845.00
- Though structurally sound, only practical use was for excess storage
- Fall 2019: Plans were drawn and framing a new useable space began



PD Annex Update

- Will provide needed “amenities” to allow our staff to adequately:
 - Perform their duties in a dedicated space for extended operational periods
 - Process potentially dangerous evidence in a safer manner
 - “Unplug” from the stressors of the moment
 - Prepare and share meals in a safe environment



PD Annex Update

Kitchen



PD Annex Update

Breakroom/Laundry



PD Annex Update

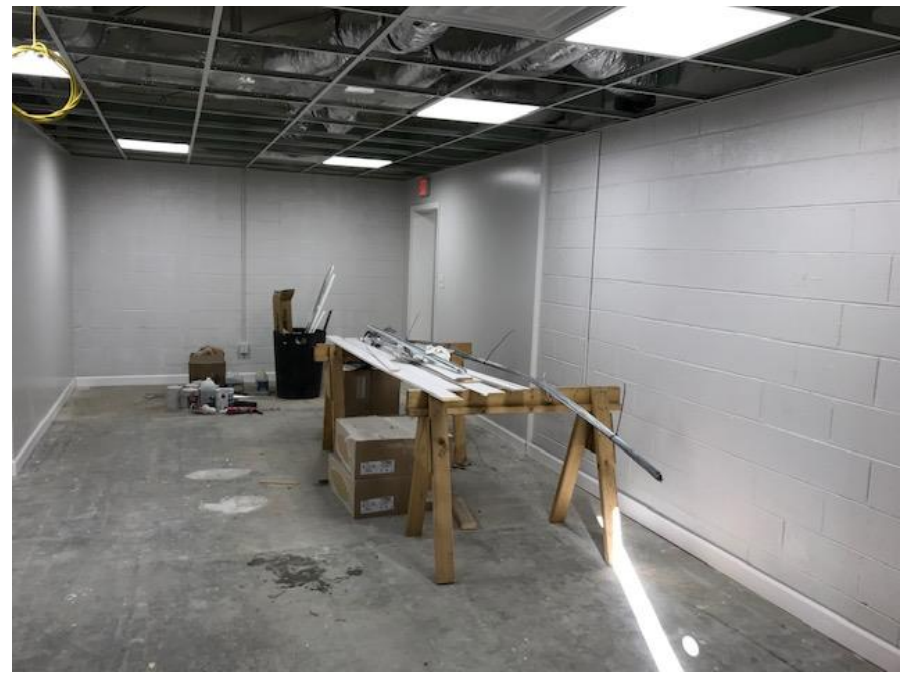
Bathrooms

2 independent shower/sink/toilet units



PD Annex Update

Training Room Space



PD Annex Update

Evidence Processing and Interview Room



PD Annex Update

Detective Office



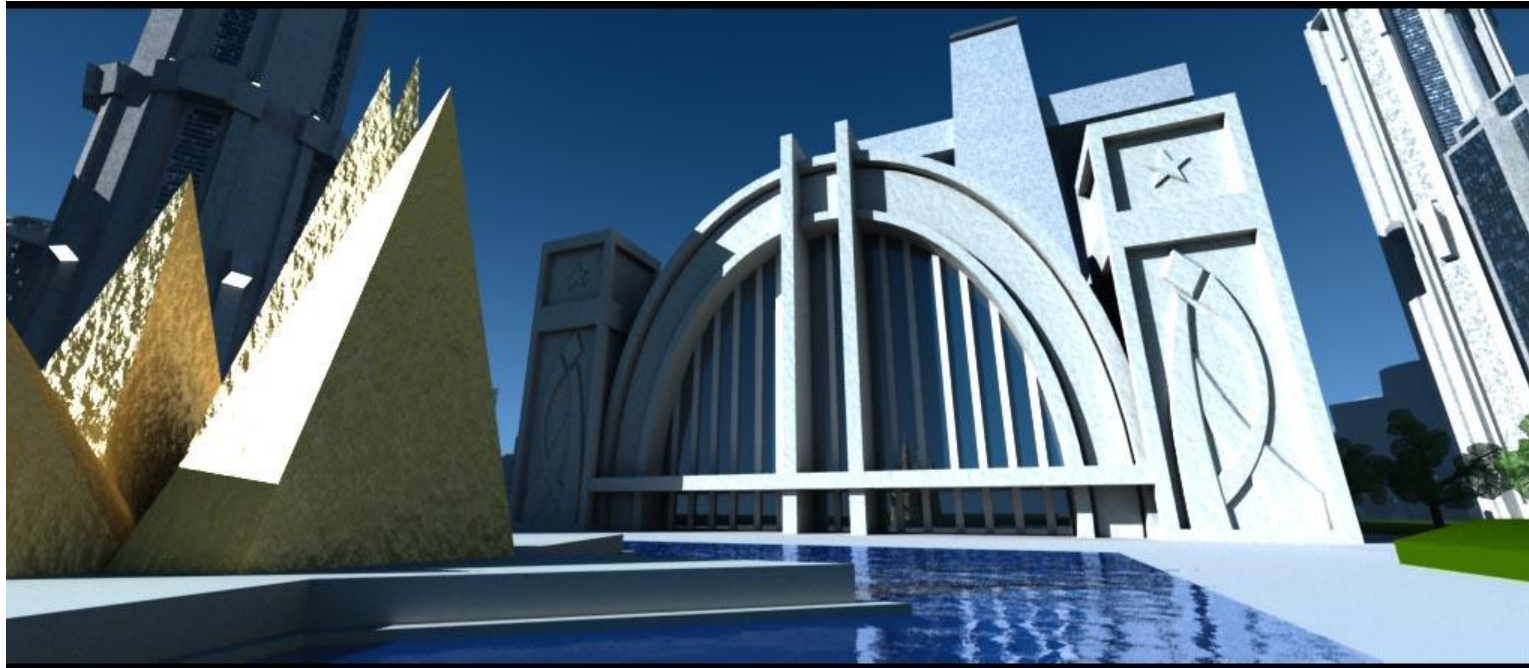
PD Annex Update

Front/Rear Exterior



PD Annex Update

- Projected Occupancy April 2020 (interior completion)
- Work to transition to exterior once occupied



PD Annex Update

Questions/Concerns?

