

Project Updates



Town of Beaufort

October 25, 2021

Active Projects

13 Active Projects (September)

- 1 Parks & Recreation
- 4 Street and Pedestrian Improvements
- 5 Utility
 - 1 Water
 - 3 Sewer
 - 1 Water & Sewer
- 2 Stormwater
- 1 Building

Active Projects

16

13 Active Projects (Today)

- 1 Parks & Recreation
- 4 Street and Pedestrian Improvements
- 5 Utility
 - 1 Water
 - 3 Sewer
 - 1 Water & Sewer
- 2 Stormwater
- 1 Building



Active Projects

(1 through 8)

- Cedar Street Park
 - FY20 Street Rehabilitation & Construction
 - Turner Street 100 Block Pedestrian Improvements
 - Town Wide Sidewalks (Part 5-FY20 Street Rehabilitation & Construction)
 - Downtown Parking
 - **Turner Street – Broad Street Traffic Calming Improvements**
 - Campen Road Waterline Extension/Upgrade
 - USDA Funded Utility Project (Water, Sewer & Stormwater)
-



Active Projects

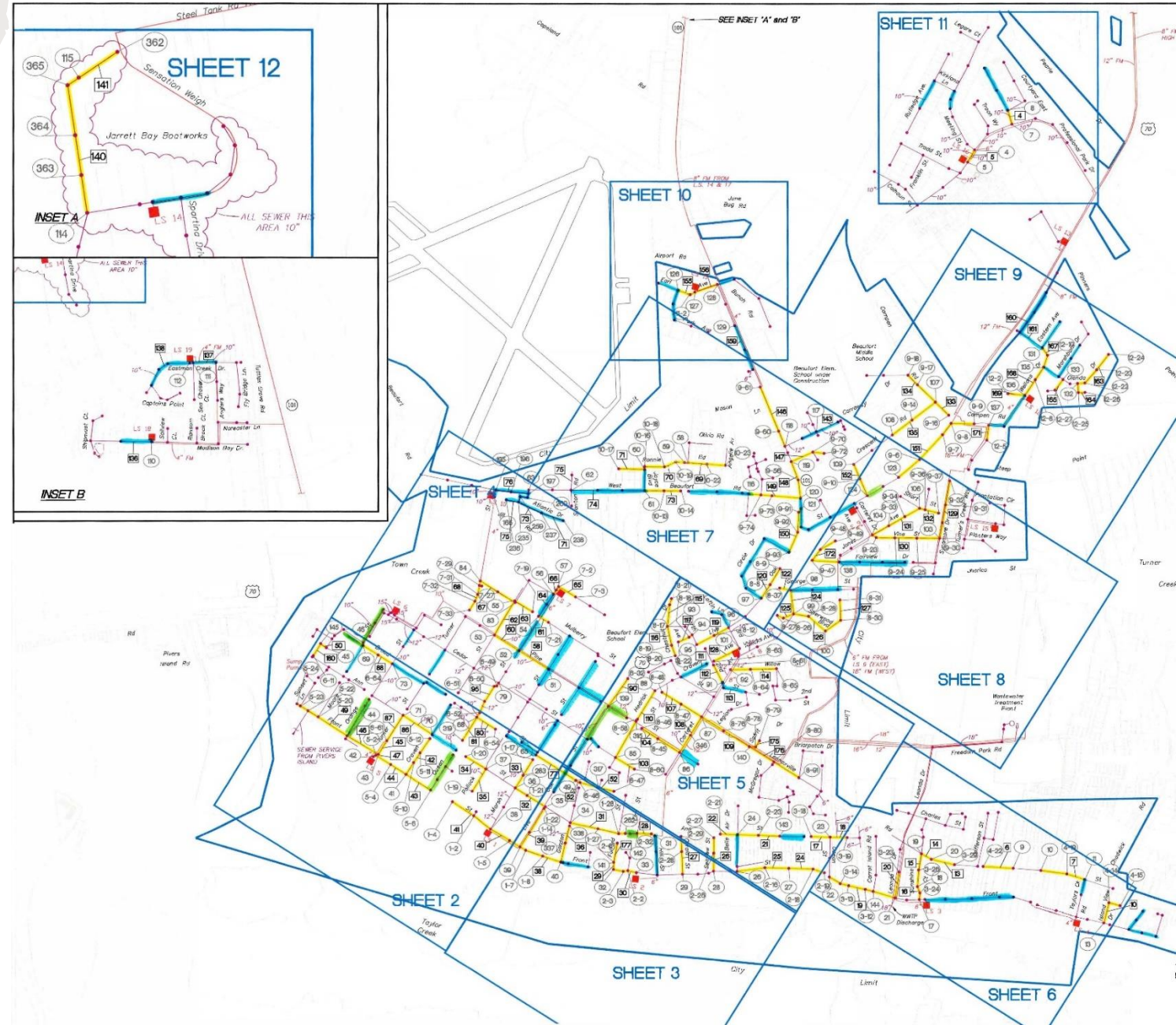
(9 through 16)

- Wastewater Asset Inventory Assessment
 - High-Rate Infiltration System Permit Reacquisition
 - ECHS Sewer Pumping Issue Investigation
 - **Wastewater Design Unit Flow Reduction Request**
 - **PruittHealth Sewer Service Construction**
 - Meeting Street Drainage Improvements
 - Lennoxville Road Pond Bank Stabilization & Culvert Replacement
 - Fire Station No. 2 Renovation
-

USDA-Funded Utility Project (Water, Sewer & Stormwater)

August Report

- CCTV Complete



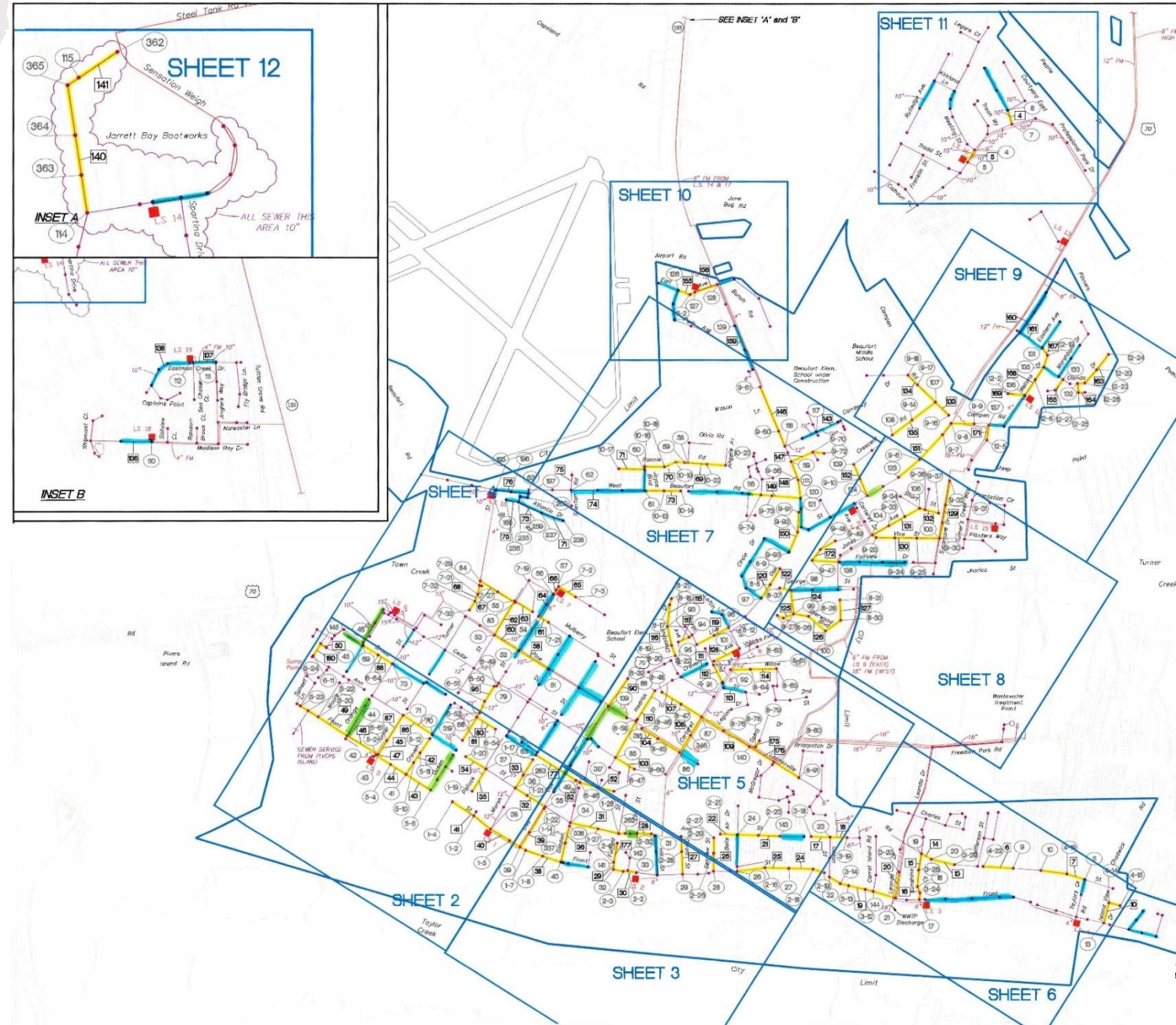
USDA-Funded Utility Project (Water, Sewer & Stormwater)

August Report

- CCTV Complete

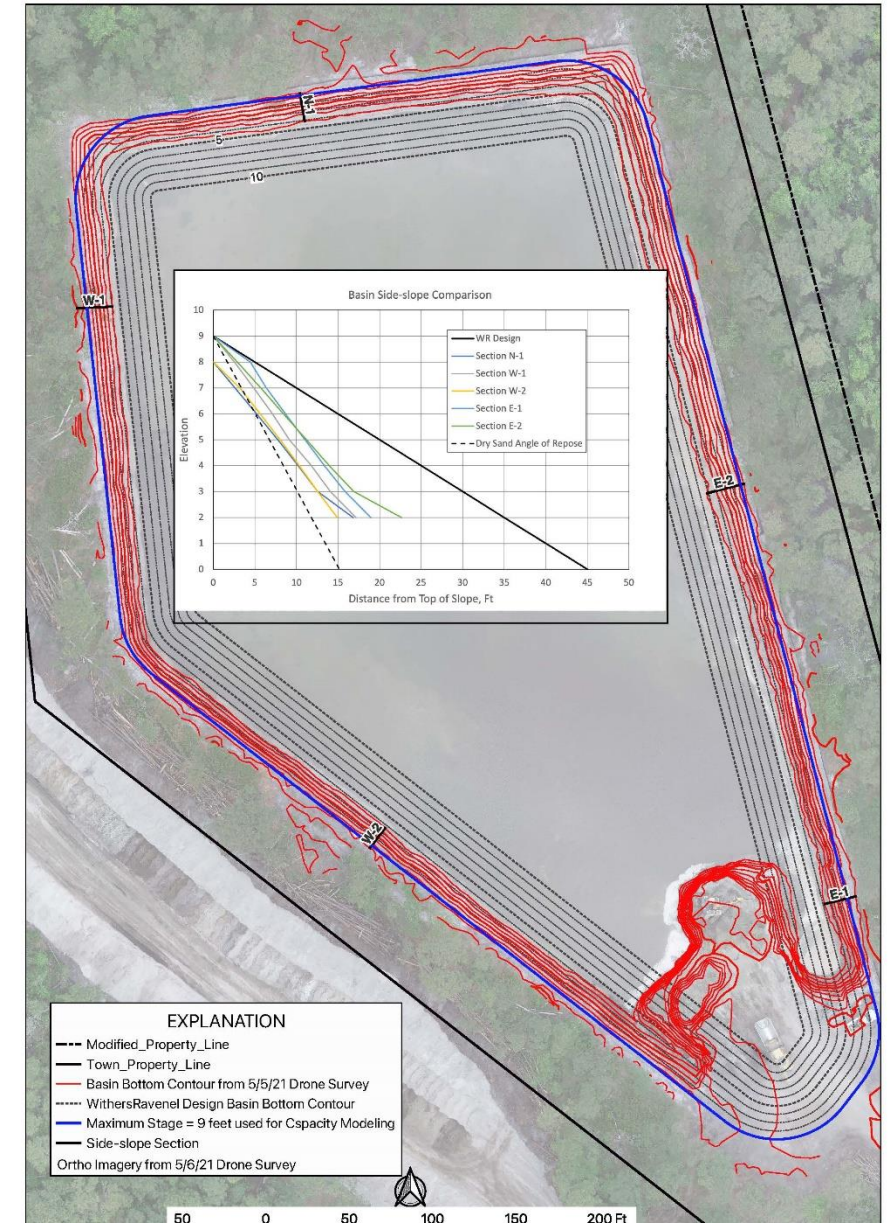
Update

- Mid-November 25 percent design meeting



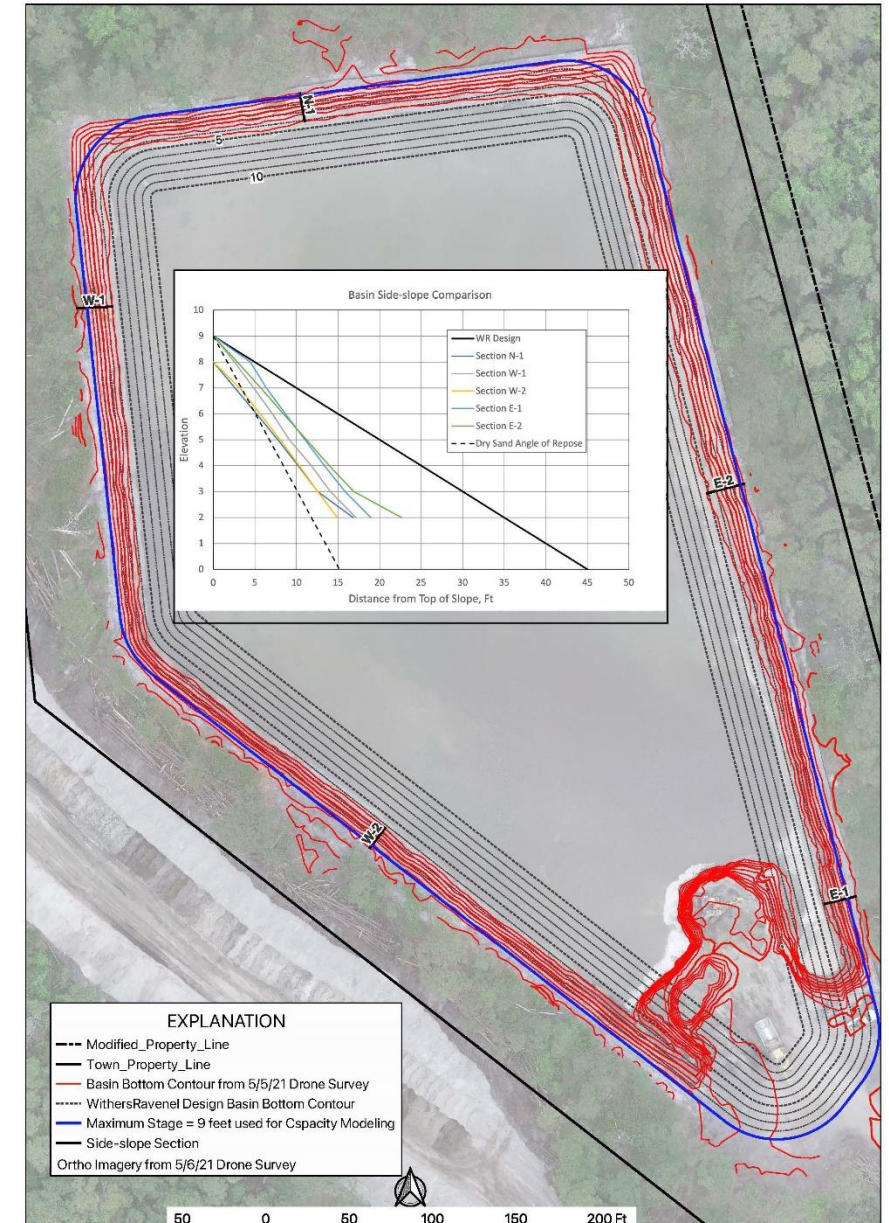
High-Rate Infiltration Basin Permit Reacquisition

- Hydrogeologic Model Updated
 - Confirmed 350,000 gallons/day effluent disposal rate
 - Groundwater lowering drain required
 - Perimeter berm needed



High-Rate Infiltration Basin Permit Reacquisition

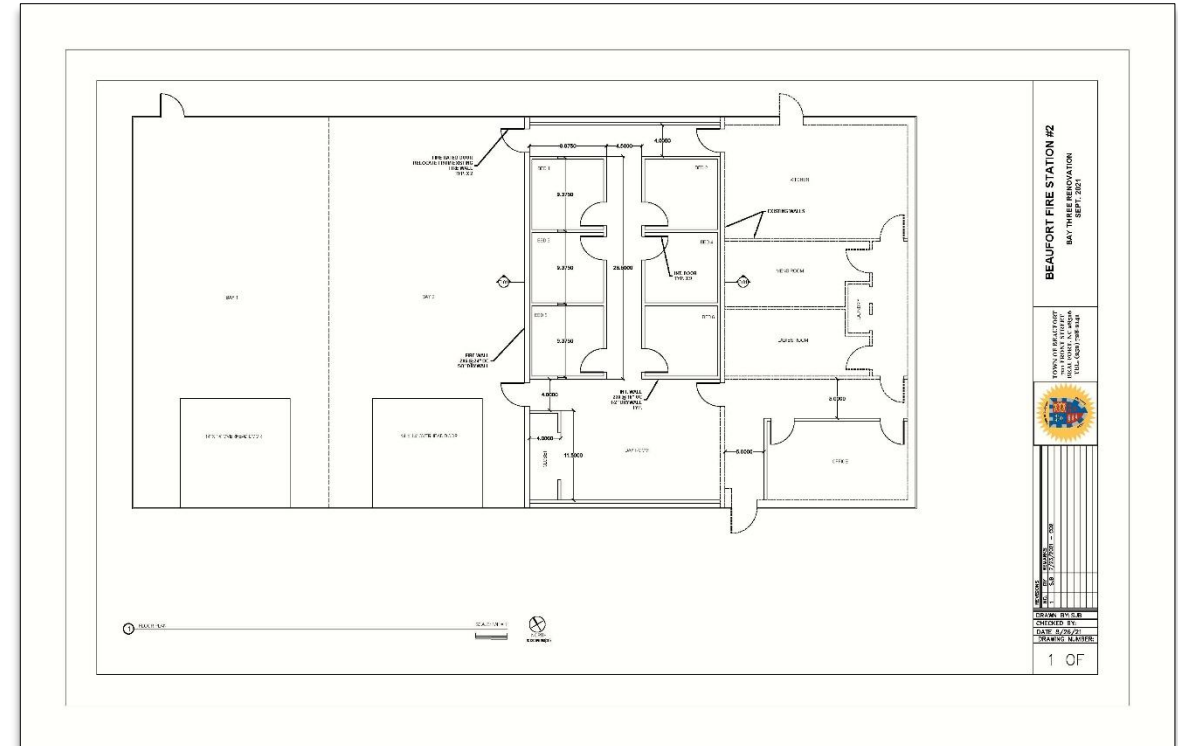
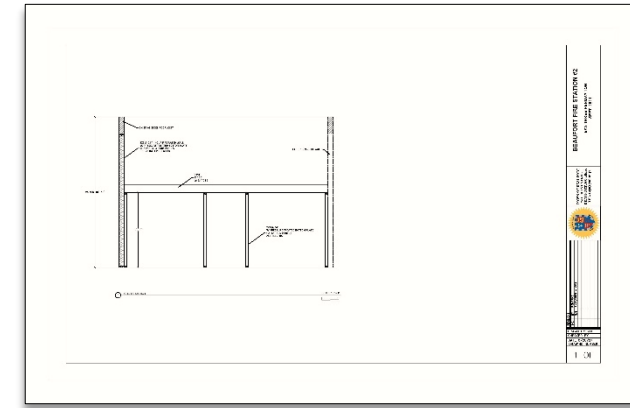
- Next
 - Final Design Plans & Specifications
 - Permit Applications
 - > Basin: Non-Discharge Permit
 - > Groundwater drain: NPDES Permit



Fire Station # 2 Renovation

Convert Truck Bay to Living Quarters

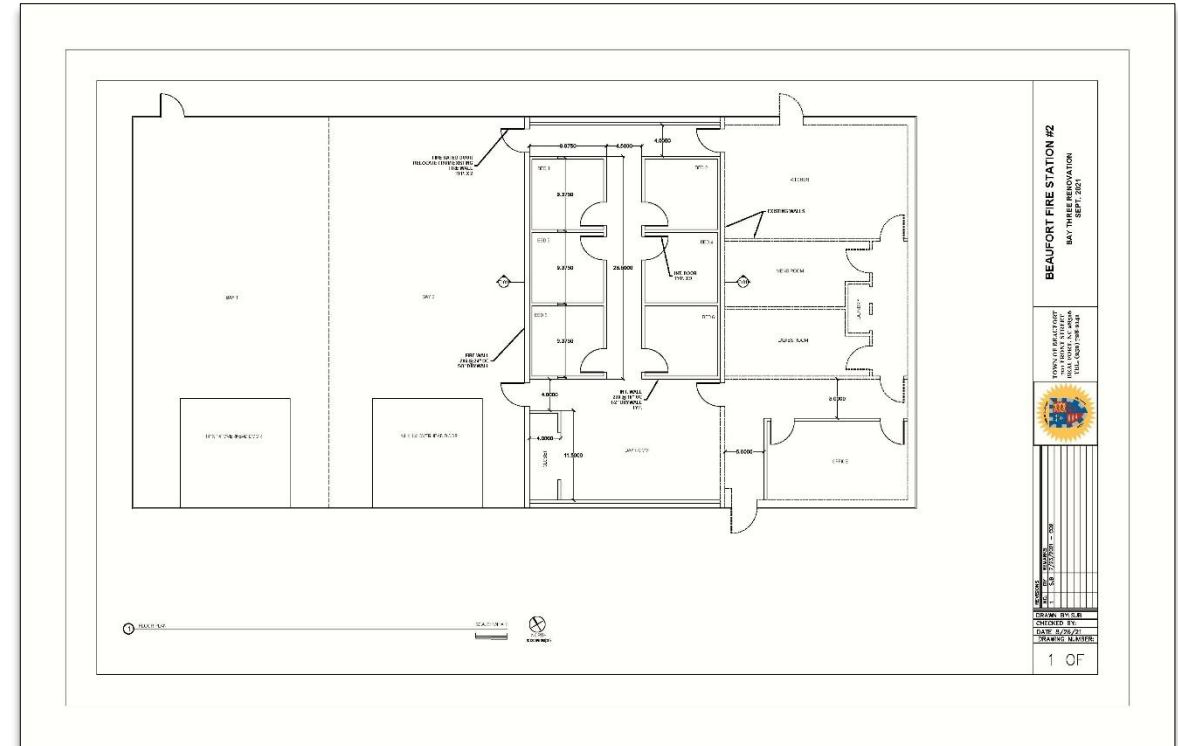
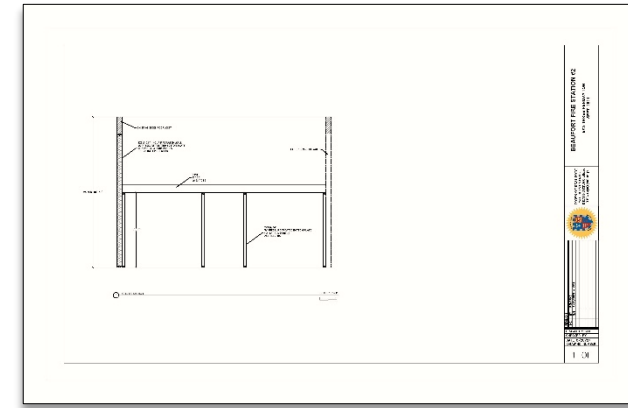
- Light Structural Renovation Plans
 - Town Engineering staff
- Electrical & HVAC Plan Preparation
 - Coordinate outside consultant(s)
- Plans at 90 percent completion
- Building permit submittal by week of October 4th



Fire Station # 2 Renovation

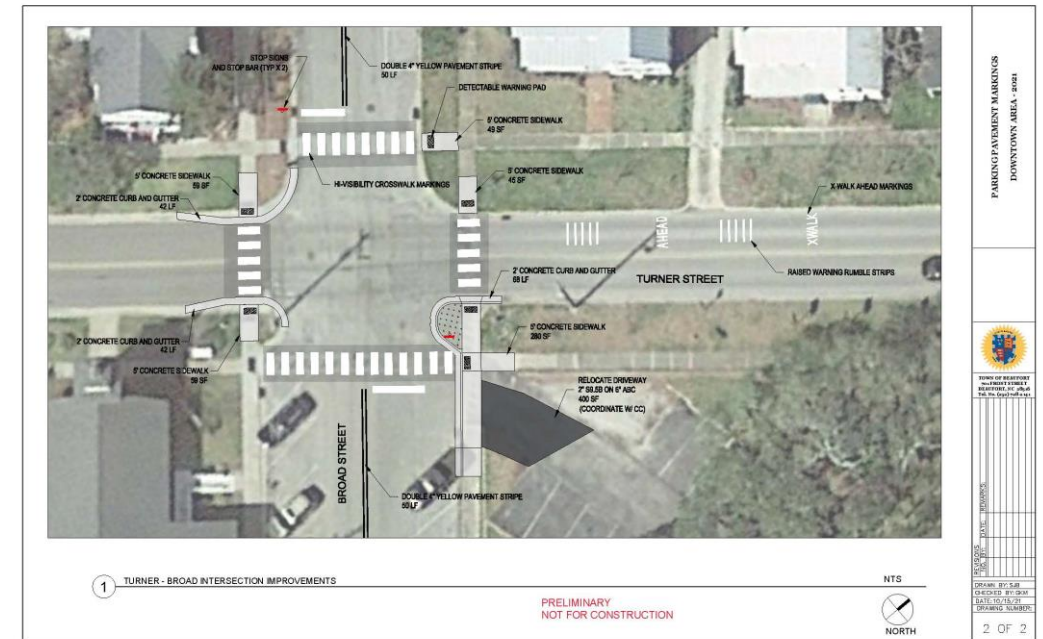
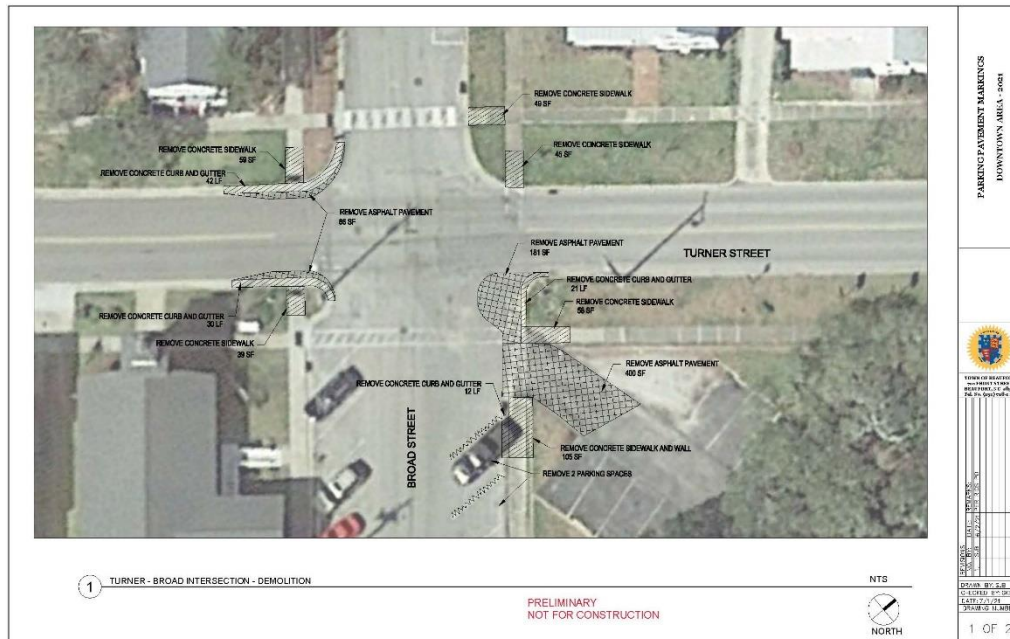
Convert Truck Bay to Living Quarters

- Light Structural Renovation Plans
 - Town Engineering staff
- Electrical & HVAC Plan Preparation
 - Coordinate outside consultant(s)
- Plans at 90 percent completion
- Building permit submittal by week of October 4th



Turner Street – Broad Street Traffic Calming Improvements

Plans at 75 percent



Wastewater Design Unit Flow Reduction Request

- Goal
 - Approval to use more accurate daily sewage flow design rate
 - Obtain from NC Department of Environmental Quality

(e) The Director may determine that a disposal system shall not be deemed to be permitted in accordance with this Rule or other Permitted By Regulation rules in this Subchapter and require the disposal system to obtain an individual permit or a certificate of coverage under a general permit. This determination shall be made based on existing or projected environmental impacts, compliance with the provisions of this Rule or other Permitted By Regulation rules in this Subchapter, and the compliance history of the facility owner.

*History Note: Authority G.S. 130A-300; 143-215.1(a)(1); 143-215.1(b)(4)(e); 143-215.3(a);
Eff. September 1, 2006;
Amended Eff. March 19, 2015; June 18, 2011;
Readopted Eff. September 1, 2018.*

15A NCAC 02T .0114 WASTEWATER DESIGN FLOW RATES

(a) This Rule shall be used to determine wastewater flow rates for all systems governed by this Subchapter unless alternate criteria are provided by a program-specific rule or for flow used for the purposes of 15A NCAC 02H .0105. Higher flow rates shall be required where usage and occupancy are atypical, including those in Paragraph (e) of this Rule. Wastewater flow calculations shall take hours of operation and anticipated maximum occupancies and usage into account when calculating peak flows for design.

(b) In determining the volume of sewage from dwelling units, the flow rate shall be 120 gallons per day per bedroom. The minimum volume of sewage from each dwelling unit shall be 240 gallons per day and each additional bedroom above two bedrooms shall increase the volume by 120 gallons per day. Each bedroom or any other room or addition that can function as a bedroom shall be considered a bedroom for design purposes. When the occupancy of a dwelling unit exceeds two persons per bedroom, the volume of sewage shall be determined by the maximum occupancy at a rate of 60 gallons per person per day.

(c) The following table shall be used to determine the minimum allowable design daily flow of wastewater facilities. Design flow rates for establishments not identified below shall be determined using available flow data, water-using fixtures, occupancy or operation patterns, and other measured data.

Type of Establishments	Daily Flow For Design
Barber and beauty shops	
Barber Shops	50 gal/chair
Beauty Shops	125 gal/booth or bowl
Businesses, offices and factories	
General business and office facilities	25 gal/employee/shift
Factories, excluding industrial waste	25 gal/employee/shift
Factories or businesses with showers or food preparation	35 gal/employee/shift
Warehouse	100 gal/loading bay
Warehouse – self storage (not including caretaker residence)	1 gal/unit
Churches	
Churches without kitchens, day care or camps	3 gal/seat
Churches with kitchen	5 gal/seat
Churches providing day care or camps	25 gal/person (child & employee)
Fire, rescue and emergency response facilities	
Fire or rescue stations without on site staff	25 gal/person
Fire or rescue stations with on-site staff	50 gal/person/shift
Food and drink facilities	
Banquet, dining hall	30 gal/seat
Bars, cocktail lounges	20 gal/seat
Caterers	50 gal/100 sq ft floor space
Restaurant, full Service	40 gal/seat
Restaurant, single service articles	20 gal/seat
Restaurant, drive-in	50 gal/car space
Restaurant, carry out only	50 gal/100 sq ft floor space
Institutions, dining halls	5 gal/meal
Deli	40 gal/100 sq ft floor space
Bakery	10 gal/100 sq ft floor space
Meat department, butcher shop or fish market	75 gal/100 sq ft floor space

Wastewater Design Unit Flow Reduction Request

- Goal
 - Approval to use more accurate daily sewage flow design rate
 - Obtain from NC Department of Environmental Quality
- Allocations of capacity become more realistic
 - Time to a WWTP expansion lengthened

(e) The Director may determine that a disposal system shall not be deemed to be permitted in accordance with this Rule or other Permitted By Regulation rules in this Subchapter and require the disposal system to obtain an individual permit or a certificate of coverage under a general permit. This determination shall be made based on existing or projected environmental impacts, compliance with the provisions of this Rule or other Permitted By Regulation rules in this Subchapter, and the compliance history of the facility owner.

History Note: Authority G.S. 130A-300; 143-215.1(a)(1); 143-215.1(b)(4)(e); 143-215.3(a);
Eff. September 1, 2006;
Amended Eff. March 19, 2015; June 18, 2011;
Readopted Eff. September 1, 2018.

15A NCAC 02T .0114 WASTEWATER DESIGN FLOW RATES

(a) This Rule shall be used to determine wastewater flow rates for all systems governed by this Subchapter unless alternate criteria are provided by a program-specific rule or for flow used for the purposes of 15A NCAC 02H .0105. Higher flow rates shall be required where usage and occupancy are atypical, including those in Paragraph (e) of this Rule. Wastewater flow calculations shall take hours of operation and anticipated maximum occupancies and usage into account when calculating peak flows for design.

(b) In determining the volume of sewage from dwelling units, the flow rate shall be 120 gallons per day per bedroom. The minimum volume of sewage from each dwelling unit shall be 240 gallons per day and each additional bedroom above two bedrooms shall increase the volume by 120 gallons per day. Each bedroom or any other room or addition that can function as a bedroom shall be considered a bedroom for design purposes. When the occupancy of a dwelling unit exceeds two persons per bedroom, the volume of sewage shall be determined by the maximum occupancy at a rate of 60 gallons per person per day.

(c) The following table shall be used to determine the minimum allowable design daily flow of wastewater facilities. Design flow rates for establishments not identified below shall be determined using available flow data, water-using fixtures, occupancy or operation patterns, and other measured data.

Type of Establishments	Daily Flow For Design
Barber and beauty shops	
Barber Shops	50 gal/chair
Beauty Shops	125 gal/booth or bowl
Businesses, offices and factories	
General business and office facilities	25 gal/employee/shift
Factories, excluding industrial waste	25 gal/employee/shift
Factories or businesses with showers or food preparation	35 gal/employee/shift
Warehouse	100 gal/loading bay
Warehouse – self storage (not including caretaker residence)	1 gal/unit
Churches	
Churches without kitchens, day care or camps	3 gal/seat
Churches with kitchen	5 gal/seat
Churches providing day care or camps	25 gal/person (child & employee)
Fire, rescue and emergency response facilities	
Fire or rescue stations without on site staff	25 gal/person
Fire or rescue stations with on-site staff	50 gal/person/shift
Food and drink facilities	
Banquet, dining hall	30 gal/seat
Bars, cocktail lounges	20 gal/seat
Caterers	50 gal/100 sq ft floor space
Restaurant, full Service	40 gal/seat
Restaurant, single service articles	20 gal/seat
Restaurant, drive-in	50 gal/car space
Restaurant, carry out only	50 gal/100 sq ft floor space
Institutions, dining halls	5 gal/meal
Deli	40 gal/100 sq ft floor space
Bakery	10 gal/100 sq ft floor space
Meat department, butcher shop or fish market	75 gal/100 sq ft floor space

Wastewater Design Unit Flow Reduction Request

(e) The Director may determine that a disposal system shall not be deemed to be permitted in accordance with this Rule or other Permitted By Regulation rules in this Subchapter and require the disposal system to obtain an individual permit or a certificate of coverage under a general permit. This determination shall be made based on existing or projected environmental impacts, compliance with the provisions of this Rule or other Permitted By Regulation rules in this Subchapter, and the compliance history of the facility owner.

History Note: Authority G.S. 130A-300; 143-215.1(a)(1); 143-215.1(b)(4)(e); 143-215.3(a);
Eff. September 1, 2006;
Amended Eff. March 19, 2015; June 18, 2011;
Readopted Eff. September 1, 2018.

15A NCAC 02T .0114 WASTEWATER DESIGN FLOW RATES

(a) This Rule shall be used to determine wastewater flow rates for all systems governed by this Subchapter unless alternate criteria are provided by a program-specific rule or for flow used for the purposes of 15A NCAC 02H .0105. Higher flow rates shall be required where usage and occupancy are atypical, including those in Paragraph (e) of this Rule. Wastewater flow calculations shall take hours of operation and anticipated maximum occupancies and usage into account when calculating peak flows for design.

(b) In determining the volume of sewage from dwelling units, the flow rate shall be 120 gallons per day per bedroom. The minimum volume of sewage from each dwelling unit shall be 240 gallons per day and each additional bedroom above two bedrooms shall increase the volume by 120 gallons per day. Each bedroom or any other room or addition that can function as a bedroom shall be considered a bedroom for design purposes. When the occupancy of a dwelling unit exceeds two persons per bedroom, the volume of sewage shall be determined by the maximum occupancy at a rate of 60 gallons per person per day.

(c) The following table shall be used to determine the minimum allowable design daily flow of wastewater facilities. Design flow rates for establishments not identified below shall be determined using available flow data, water-using fixtures, occupancy or operation patterns, and other measured data.

(b) In determining the volume of sewage from dwelling units, the flow rate shall be 120 gallons per day per bedroom. The minimum volume of sewage from each dwelling unit shall be 240 gallons per day and each additional bedroom above two bedrooms shall increase the volume by 120 gallons per day. Each bedroom or any other room or addition that can function as a bedroom shall be considered a bedroom for design purposes. When the occupancy of a dwelling unit exceeds two persons per bedroom, the volume of sewage shall be determined by the maximum occupancy at a rate of 60 gallons per person per day.

	Daily Flow For Design
Restrooms	50 gal/chair
Booths	125 gal/booth or bowl
Restrooms	25 gal/employee/shift
Office facilities	25 gal/employee/shift
Industrial waste	35 gal/employee/shift
Facilities with showers or food preparation	100 gal/loading bay
Residence (not including caretaker residence)	1 gal/unit
Child care facilities, day care or camps	3 gal/seat
Churches with kitchen	5 gal/seat
Churches providing day care or camps	25 gal/person (child & employee)
Fire, rescue and emergency response facilities	
Fire or rescue stations without on site staff	25 gal/person
Fire or rescue stations with on-site staff	50 gal/person/shift
Food and drink facilities	
Banquet, dining hall	30 gal/seat
Bars, cocktail lounges	20 gal/seat
Caterers	50 gal/100 sq ft floor space
Restaurant, full service	40 gal/seat
Restaurant, single service articles	20 gal/seat
Restaurant, drive-in	50 gal/car space
Restaurant, carry out only	50 gal/100 sq ft floor space
Institutions, dining halls	5 gal/meal
Deli	40 gal/100 sq ft floor space
Bakery	10 gal/100 sq ft floor space
Meat department, butcher shop or fish market	75 gal/100 sq ft floor space

Wastewater Design Unit Flow Reduction Request

- Complete
 - Assemble WWTP flowmeter calibration records
 - Document past infiltration & inflow studies and corrective actions
 - Compile daily WWTP influent flow records from 2018 to present

(e) The Director may determine that a disposal system shall not be deemed to be permitted in accordance with this Rule or other Permitted By Regulation rules in this Subchapter and require the disposal system to obtain an individual permit or a certificate of coverage under a general permit. This determination shall be made based on existing or projected environmental impacts, compliance with the provisions of this Rule or other Permitted By Regulation rules in this Subchapter, and the compliance history of the facility owner.

*History Note: Authority G.S. 130A-300; 143-215.1(a)(1); 143-215.1(b)(4)(e); 143-215.3(a);
Eff. September 1, 2006;
Amended Eff. March 19, 2015; June 18, 2011;
Readopted Eff. September 1, 2018.*

15A NCAC 02T .0114 WASTEWATER DESIGN FLOW RATES

(a) This Rule shall be used to determine wastewater flow rates for all systems governed by this Subchapter unless alternate criteria are provided by a program-specific rule or for flow used for the purposes of 15A NCAC 02H .0105. Higher flow rates shall be required where usage and occupancy are atypical, including those in Paragraph (e) of this Rule. Wastewater flow calculations shall take hours of operation and anticipated maximum occupancies and usage into account when calculating peak flows for design.

(b) In determining the volume of sewage from dwelling units, the flow rate shall be 120 gallons per day per bedroom. The minimum volume of sewage from each dwelling unit shall be 240 gallons per day and each additional bedroom above two bedrooms shall increase the volume by 120 gallons per day. Each bedroom or any other room or addition that can function as a bedroom shall be considered a bedroom for design purposes. When the occupancy of a dwelling unit exceeds two persons per bedroom, the volume of sewage shall be determined by the maximum occupancy at a rate of 60 gallons per person per day.

(c) The following table shall be used to determine the minimum allowable design daily flow of wastewater facilities. Design flow rates for establishments not identified below shall be determined using available flow data, water-using fixtures, occupancy or operation patterns, and other measured data.

Type of Establishments	Daily Flow For Design
Barber and beauty shops	
Barber Shops	50 gal/chair
Beauty Shops	125 gal/booth or bowl
Businesses, offices and factories	
General business and office facilities	25 gal/employee/shift
Factories, excluding industrial waste	25 gal/employee/shift
Factories or businesses with showers or food preparation	35 gal/employee/shift
Warehouse	100 gal/loading bay
Warehouse – self storage (not including caretaker residence)	1 gal/unit
Churches	
Churches without kitchens, day care or camps	3 gal/seat
Churches with kitchen	5 gal/seat
Churches providing day care or camps	25 gal/person (child & employee)
Fire, rescue and emergency response facilities	
Fire or rescue stations without on site staff	25 gal/person
Fire or rescue stations with on-site staff	50 gal/person/shift
Food and drink facilities	
Banquet, dining hall	30 gal/seat
Bars, cocktail lounges	20 gal/seat
Caterers	50 gal/100 sq ft floor space
Restaurant, full Service	40 gal/seat
Restaurant, single service articles	20 gal/seat
Restaurant, drive-in	50 gal/car space
Restaurant, carry out only	50 gal/100 sq ft floor space
Institutions, dining halls	5 gal/meal
Deli	40 gal/100 sq ft floor space
Bakery	10 gal/100 sq ft floor space
Meat department, butcher shop or fish market	75 gal/100 sq ft floor space

Wastewater Design Unit Flow Reduction Request

- Underway
 - Determine number of sewer customers
 - > Month-by-month basis
 - > Residential vs. Non-residential

(e) The Director may determine that a disposal system shall not be deemed to be permitted in accordance with this Rule or other Permitted By Regulation rules in this Subchapter and require the disposal system to obtain an individual permit or a certificate of coverage under a general permit. This determination shall be made based on existing or projected environmental impacts, compliance with the provisions of this Rule or other Permitted By Regulation rules in this Subchapter, and the compliance history of the facility owner.

History Note: Authority G.S. 130A-300; 143-215.1(a)(1); 143-215.1(b)(4)(e); 143-215.3(a);
Eff. September 1, 2006;
Amended Eff. March 19, 2015; June 18, 2011;
Readopted Eff. September 1, 2018.

15A NCAC 02T .0114 WASTEWATER DESIGN FLOW RATES

(a) This Rule shall be used to determine wastewater flow rates for all systems governed by this Subchapter unless alternate criteria are provided by a program-specific rule or for flow used for the purposes of 15A NCAC 02H .0105. Higher flow rates shall be required where usage and occupancy are atypical, including those in Paragraph (e) of this Rule. Wastewater flow calculations shall take hours of operation and anticipated maximum occupancies and usage into account when calculating peak flows for design.

(b) In determining the volume of sewage from dwelling units, the flow rate shall be 120 gallons per day per bedroom. The minimum volume of sewage from each dwelling unit shall be 240 gallons per day and each additional bedroom above two bedrooms shall increase the volume by 120 gallons per day. Each bedroom or any other room or addition that can function as a bedroom shall be considered a bedroom for design purposes. When the occupancy of a dwelling unit exceeds two persons per bedroom, the volume of sewage shall be determined by the maximum occupancy at a rate of 60 gallons per person per day.

(c) The following table shall be used to determine the minimum allowable design daily flow of wastewater facilities. Design flow rates for establishments not identified below shall be determined using available flow data, water-using fixtures, occupancy or operation patterns, and other measured data.

Type of Establishments	Daily Flow For Design
Barber and beauty shops	
Barber Shops	50 gal/chair
Beauty Shops	125 gal/booth or bowl
Businesses, offices and factories	
General business and office facilities	25 gal/employee/shift
Factories, excluding industrial waste	25 gal/employee/shift
Factories or businesses with showers or food preparation	35 gal/employee/shift
Warehouse	100 gal/loading bay
Warehouse – self storage (not including caretaker residence)	1 gal/unit
Churches	
Churches without kitchens, day care or camps	3 gal/seat
Churches with kitchen	5 gal/seat
Churches providing day care or camps	25 gal/person (child & employee)
Fire, rescue and emergency response facilities	
Fire or rescue stations without on site staff	25 gal/person
Fire or rescue stations with on-site staff	50 gal/person/shift
Food and drink facilities	
Banquet, dining hall	30 gal/seat
Bars, cocktail lounges	20 gal/seat
Caterers	50 gal/100 sq ft floor space
Restaurant, full Service	40 gal/seat
Restaurant, single service articles	20 gal/seat
Restaurant, drive-in	50 gal/car space
Restaurant, carry out only	50 gal/100 sq ft floor space
Institutions, dining halls	5 gal/meal
Deli	40 gal/100 sq ft floor space
Bakery	10 gal/100 sq ft floor space
Meat department, butcher shop or fish market	75 gal/100 sq ft floor space

Wastewater Design Unit Flow Reduction Request

- Next
 - Design flow rate determination
 - Formalize request to NCDEQ

(e) The Director may determine that a disposal system shall not be deemed to be permitted in accordance with this Rule or other Permitted By Regulation rules in this Subchapter and require the disposal system to obtain an individual permit or a certificate of coverage under a general permit. This determination shall be made based on existing or projected environmental impacts, compliance with the provisions of this Rule or other Permitted By Regulation rules in this Subchapter, and the compliance history of the facility owner.

History Note: Authority G.S. 130A-300; 143-215.1(a)(1); 143-215.1(b)(4)(e); 143-215.3(a);
Eff. September 1, 2006;
Amended Eff. March 19, 2015; June 18, 2011;
Readopted Eff. September 1, 2018.

15A NCAC 02T .0114 WASTEWATER DESIGN FLOW RATES

(a) This Rule shall be used to determine wastewater flow rates for all systems governed by this Subchapter unless alternate criteria are provided by a program-specific rule or for flow used for the purposes of 15A NCAC 02H .0105. Higher flow rates shall be required where usage and occupancy are atypical, including those in Paragraph (e) of this Rule. Wastewater flow calculations shall take hours of operation and anticipated maximum occupancies and usage into account when calculating peak flows for design.

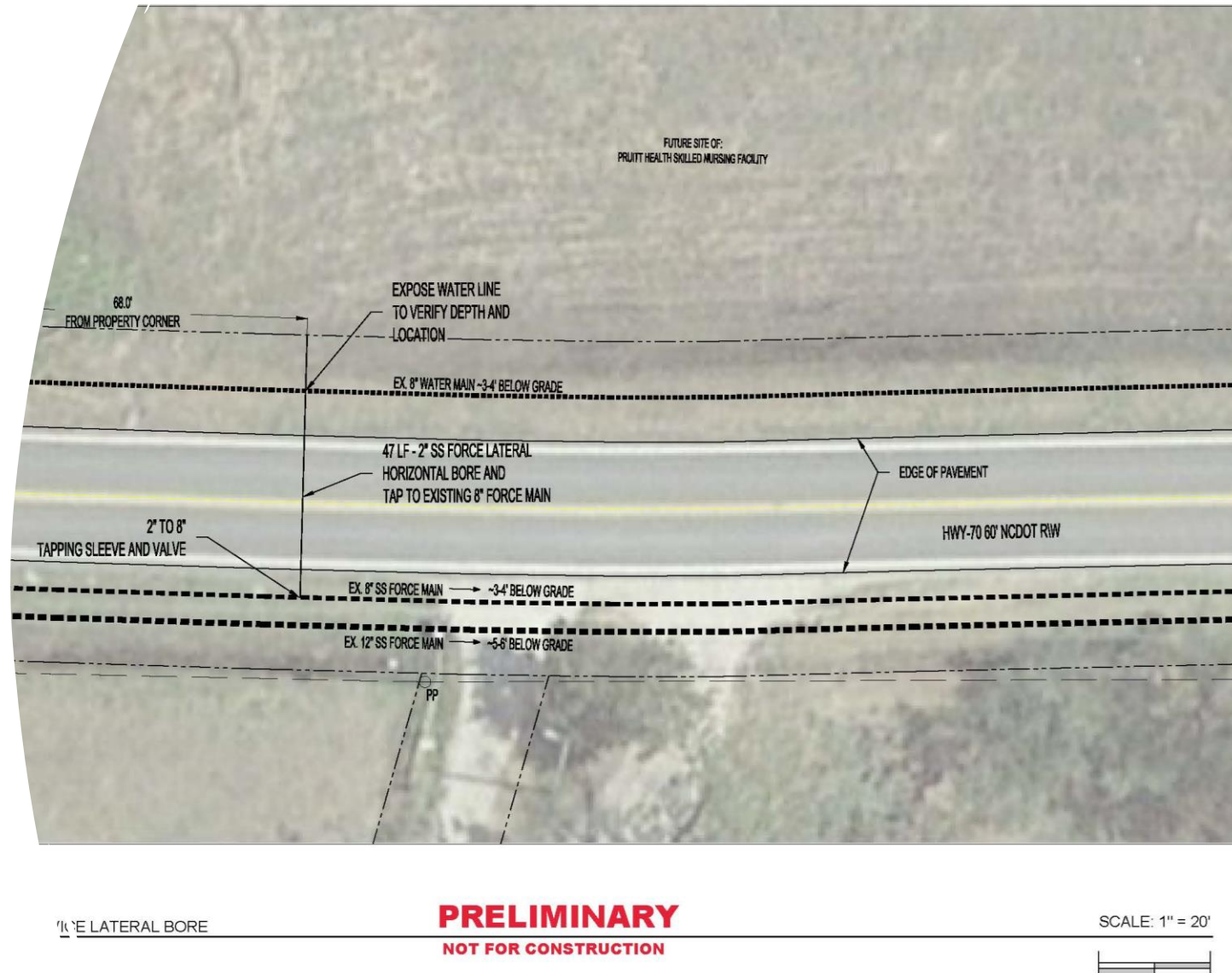
(b) In determining the volume of sewage from dwelling units, the flow rate shall be 120 gallons per day per bedroom. The minimum volume of sewage from each dwelling unit shall be 240 gallons per day and each additional bedroom above two bedrooms shall increase the volume by 120 gallons per day. Each bedroom or any other room or addition that can function as a bedroom shall be considered a bedroom for design purposes. When the occupancy of a dwelling unit exceeds two persons per bedroom, the volume of sewage shall be determined by the maximum occupancy at a rate of 60 gallons per person per day.

(c) The following table shall be used to determine the minimum allowable design daily flow of wastewater facilities. Design flow rates for establishments not identified below shall be determined using available flow data, water-using fixtures, occupancy or operation patterns, and other measured data.

Type of Establishments	Daily Flow For Design
Barber and beauty shops	
Barber Shops	50 gal/chair
Beauty Shops	125 gal/booth or bowl
Businesses, offices and factories	
General business and office facilities	25 gal/employee/shift
Factories, excluding industrial waste	25 gal/employee/shift
Factories or businesses with showers or food preparation	35 gal/employee/shift
Warehouse	100 gal/loading bay
Warehouse – self storage (not including caretaker residence)	1 gal/unit
Churches	
Churches without kitchens, day care or camps	3 gal/seat
Churches with kitchen	5 gal/seat
Churches providing day care or camps	25 gal/person (child & employee)
Fire, rescue and emergency response facilities	
Fire or rescue stations without on site staff	25 gal/person
Fire or rescue stations with on-site staff	50 gal/person/shift
Food and drink facilities	
Banquet, dining hall	30 gal/seat
Bars, cocktail lounges	20 gal/seat
Caterers	50 gal/100 sq ft floor space
Restaurant, full Service	40 gal/seat
Restaurant, single service articles	20 gal/seat
Restaurant, drive-in	50 gal/car space
Restaurant, carry out only	50 gal/100 sq ft floor space
Institutions, dining halls	5 gal/meal
Deli	40 gal/100 sq ft floor space
Bakery	10 gal/100 sq ft floor space
Meat department, butcher shop or fish market	75 gal/100 sq ft floor space

PruittHealth Sewer Service Construction

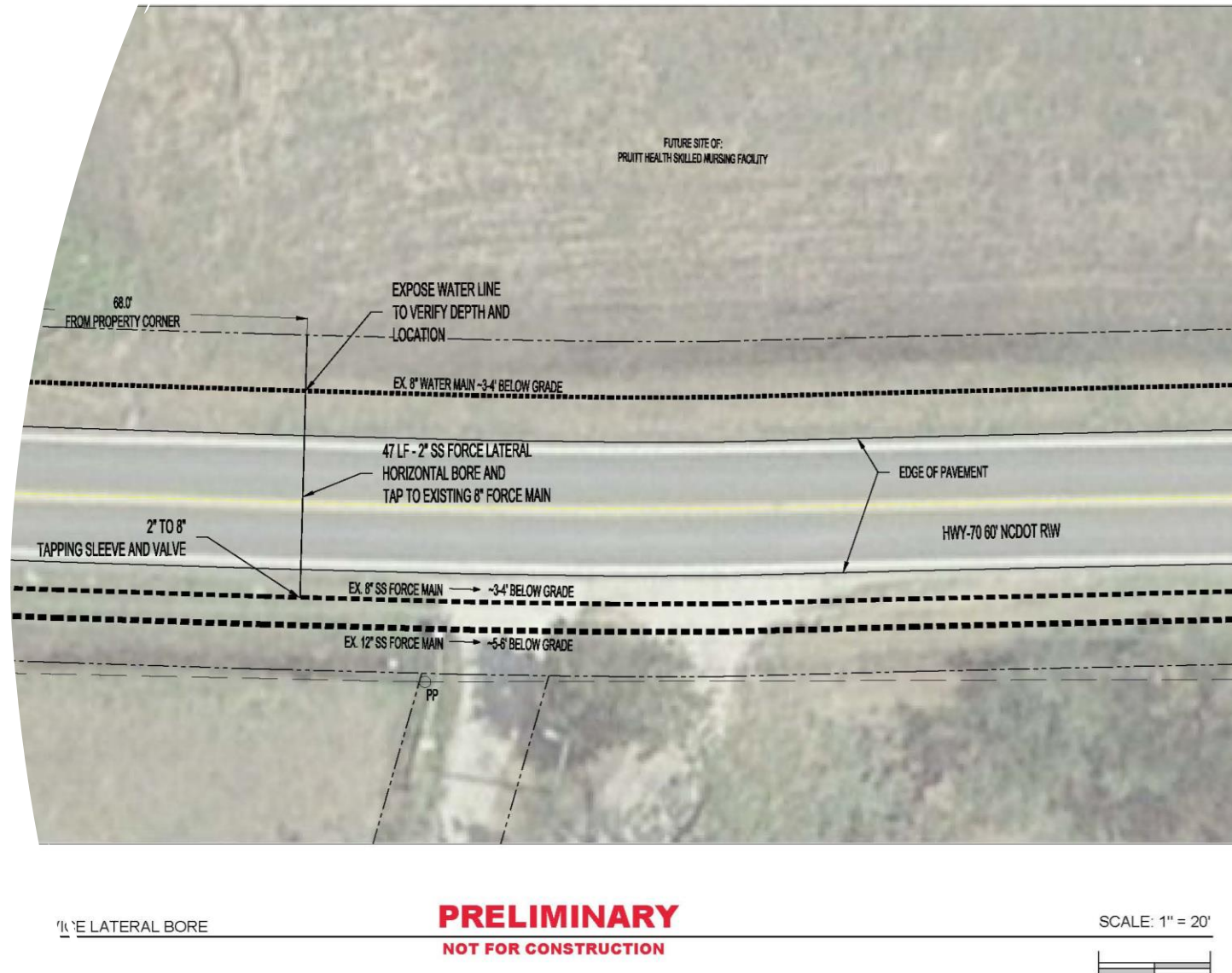
- Town to construct pressure service line across US70
- NCDOT Encroachment
 - Encroachment agreement
 - Plans
 - Material specifications



PruittHealth Sewer Service Construction

- Town to construct pressure service line across US70
- NCDOT Encroachment
 - Encroachment agreement
 - Plans
 - Material specifications

Plans at 50 percent



Project Updates

QUESTIONS?

COMMENTS?

